

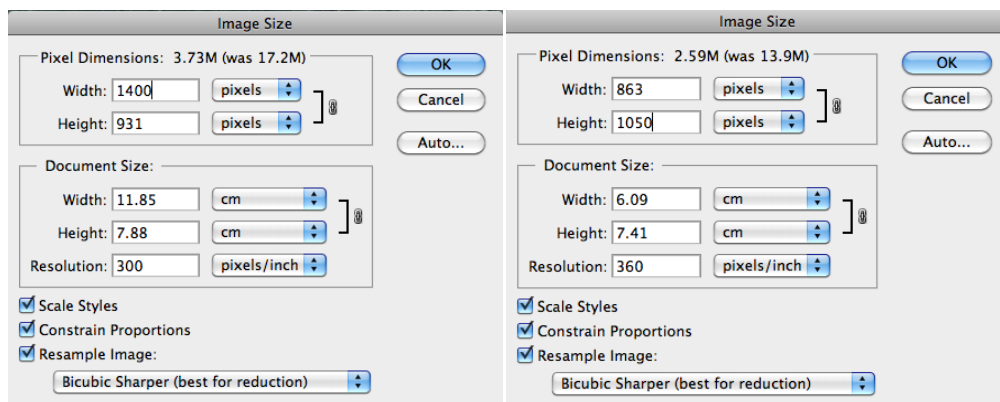
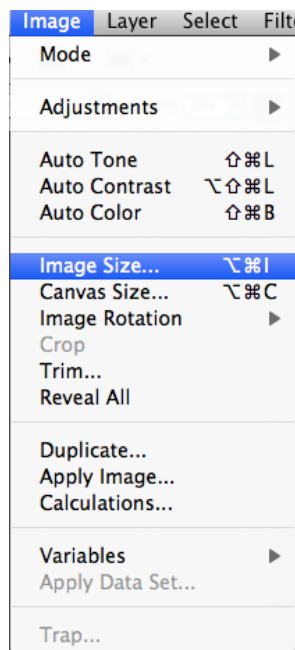
# Preparing Digital Files For Projection

Tamworth Photographic Club competes in external Projected Digital Image (PDI) Competitions and will be introducing internal PDI events during the forthcoming year. The following notes are to assist Members preparing their files for projection.

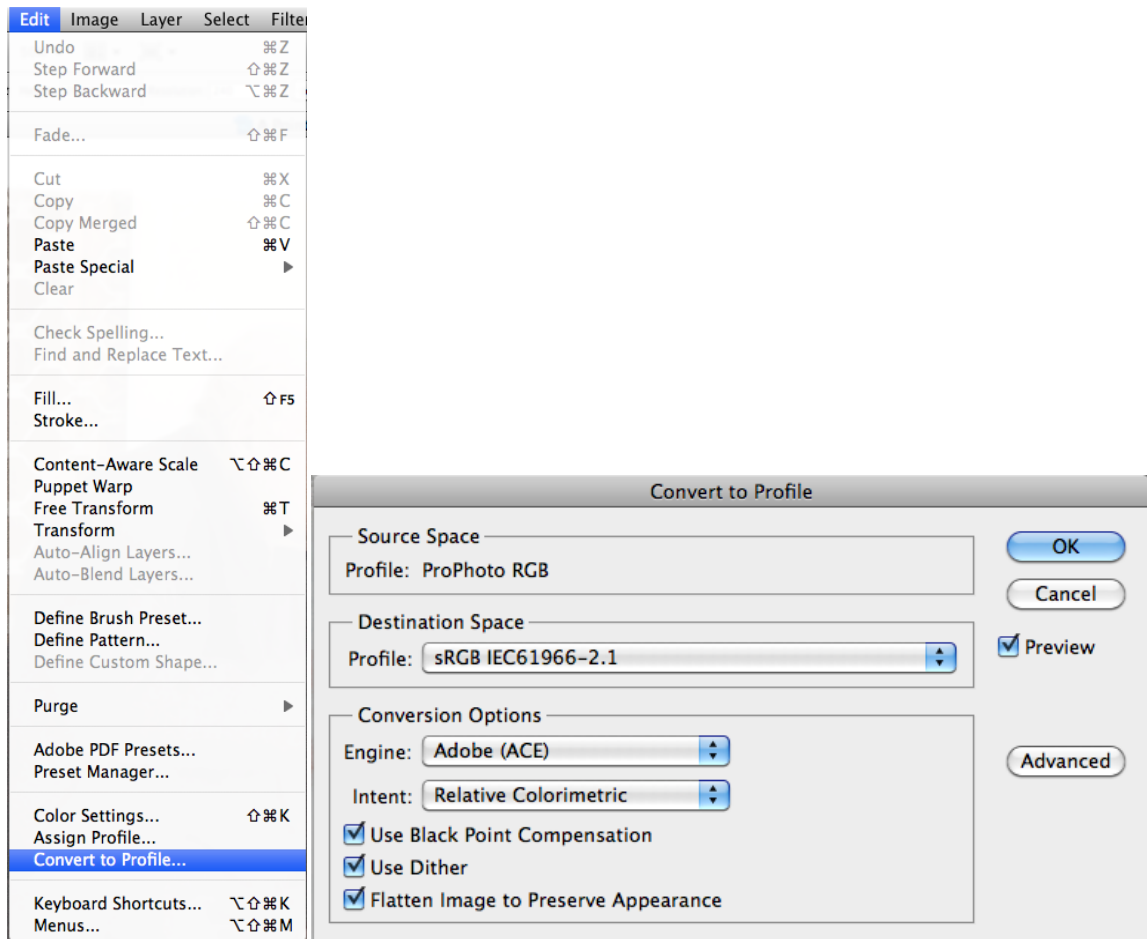
1. Size: the maximum size is 1400 pixels wide and 1050 pixels high.
2. Colour Space: this should be sRGB 8-bit or greyscale 8-bit.
3. File Name: the naming convention may vary from exhibition to exhibition; the following notes will set out the naming convention for TPC competitions.

## Methodology:

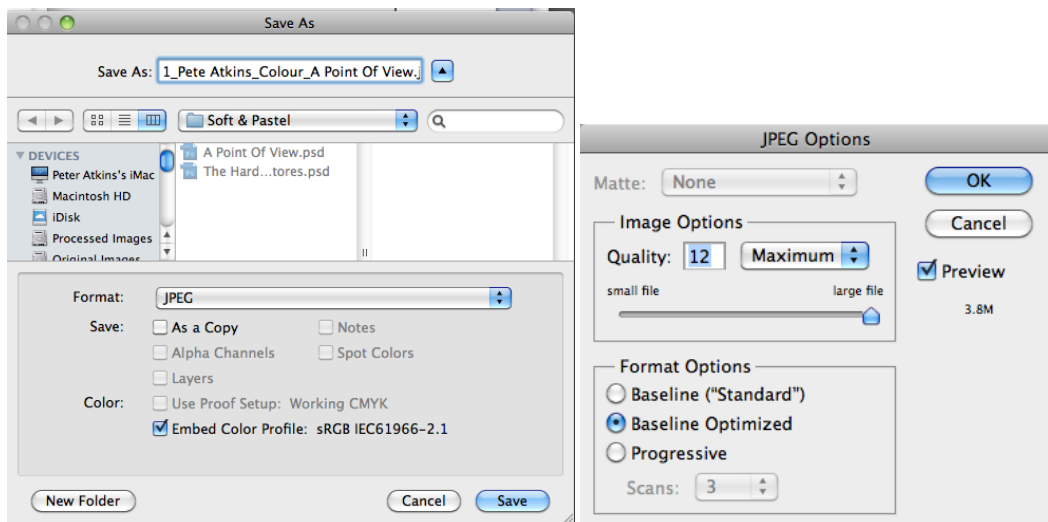
1. **General:** It is always advisable to work on a duplicate of the original image to avoid the possibility of losing valuable data. The file should be flattened. Avoid over sharpening and excessive contrast enhancement.
2. **Image Size:** there are several ways to reduce the file size to 1400 x 1050. The most straightforward way is to use the “image size” window. This can be found as shown; the image size windows show landscape and portrait options. The pixel dimensions are all that are altered and because Constrain Proportions is ticked the second dimension is automatically set. Note that bottom window shows Bicubic Sharper (best for reduction).



3. Colour Space: most exhibitions prefer images to be in sRGB; your images are likely to be in Adobe RGB. So it is necessary to convert the colour space to ensure the best colour rendition of the PDI. This is done as follows:



3. Format & Naming: generally speaking external exhibitions will ask for jpeg or tiff file format. Where possible tiffs should be used, as they offer a slightly best quality. However, jpeg is widely used and that is the format suggested. The image must be in 8-bit colour or greyscale to enable it to be saved as a jpeg. The naming should be Number\_Name\_Section\_Title



Note: Screen grabs are off a mac and CS5 so there will be slight variations.