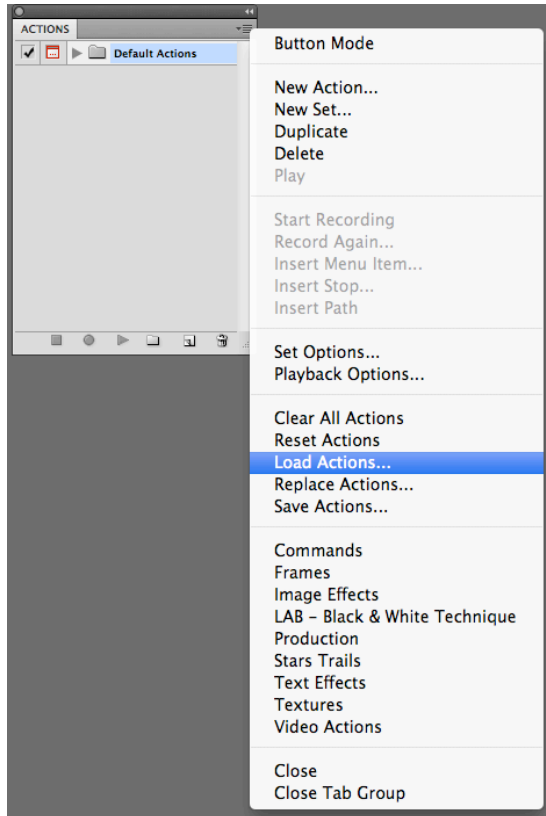
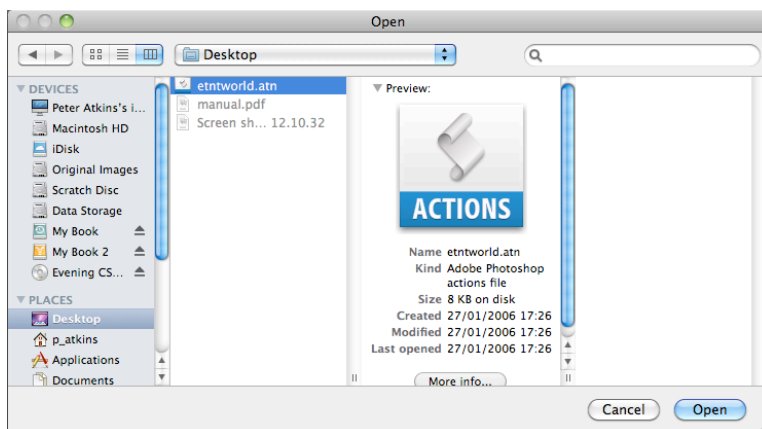


# Loading “Actions” in Photoshop

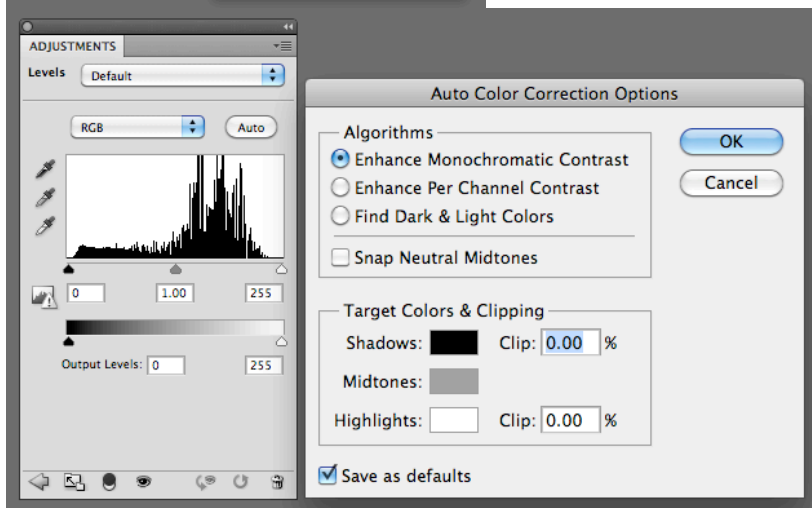
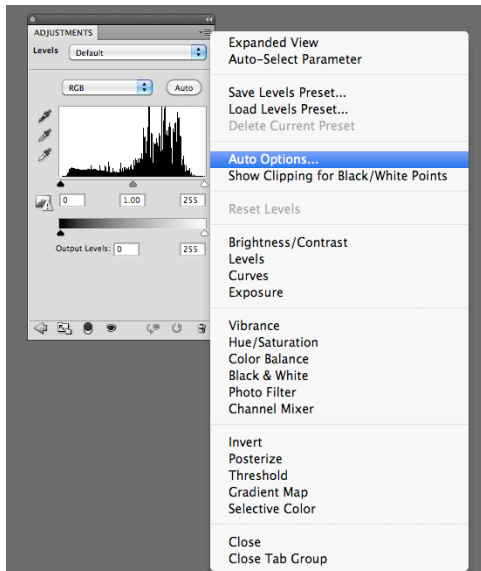
1. Make sure the “Action” to be loaded is readily accessible.
2. Open an image in Photoshop and access the Actions palette (see below)



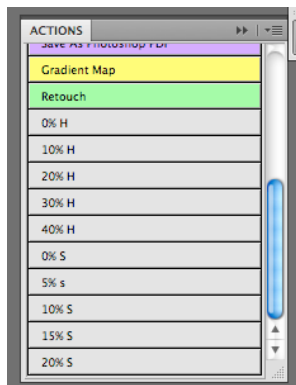
3. Click on “Load Action” and use browser to locate “ Action “ to be loaded ( see below).



4. In Actions palette drop-down menu click on “ Button Mode “ (see first diagram).
5. In Photoshop, with image open, go to adjustment layer for “ Levels “ and in drop-down menu select “ Auto Options “ and make adjustment as shown in diagram below.



- The "Retouch Action" is now ready to use. Open an image, go to the Actions palette and click on the "Retouch" button ( see below ).



- The overall contrast can be adjusted by clicking on the various % buttons.
- The action will work on any image; the contrast of the image will be increased without the introduction of a colour shift.